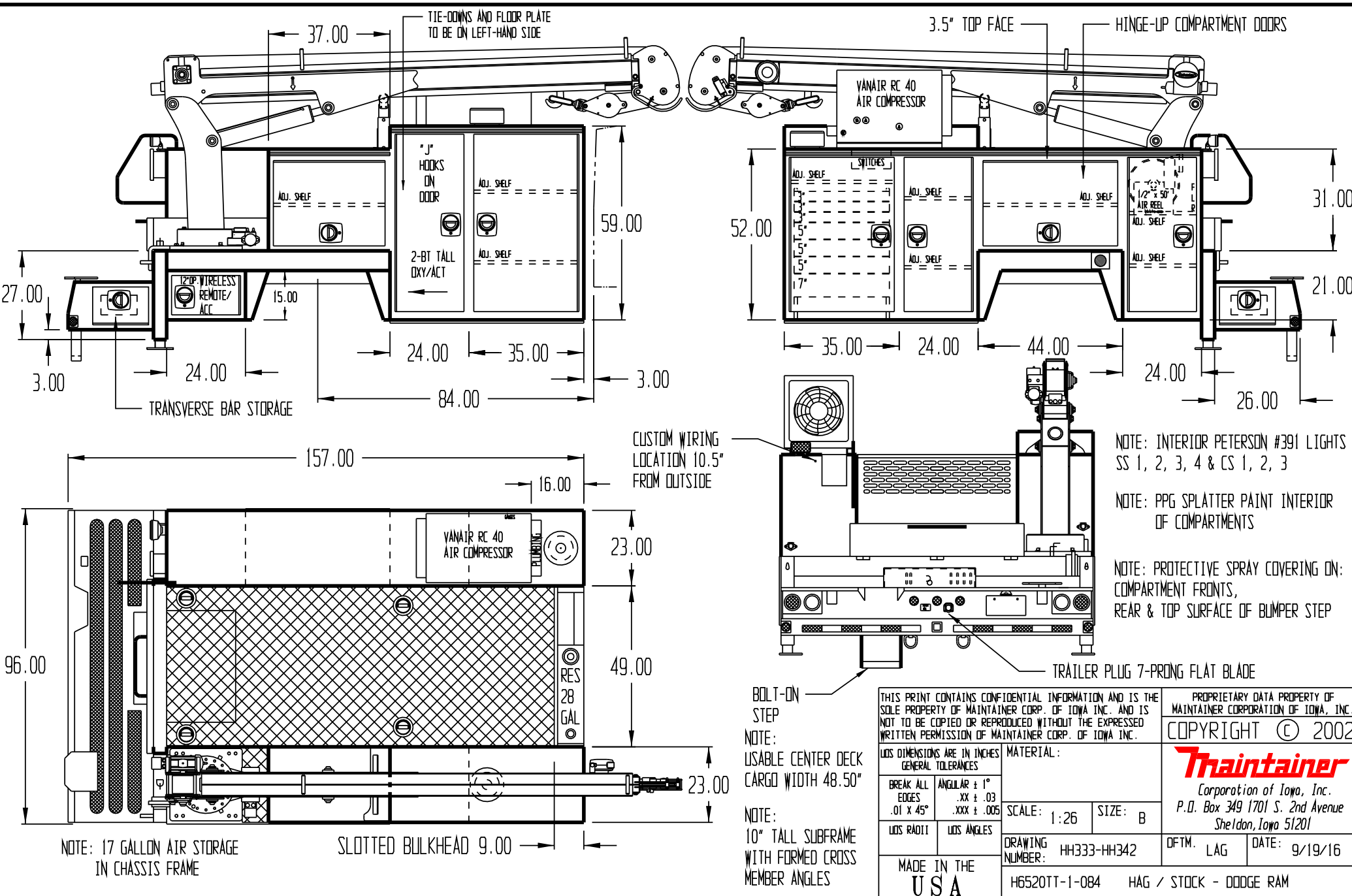


APPROVED BY _____

DATE _____

PAINT CODE _____

PW7 BRIGHT WHITE



NOTE: INTERIOR PETERSON #391 LIGHTS SS 1, 2, 3, 4 & CS 1, 2, 3

NOTE: PPG SPLATTER PAINT INTERIOR OF COMPARTMENTS

NOTE: PROTECTIVE SPRAY COVERING ON: COMPARTMENT FRONTS, REAR & TOP SURFACE OF BUMPER STEP

BOLT-ON STEP
 NOTE: USABLE CENTER DECK CARGO WIDTH 48.50"
 NOTE: 10" TALL SUBFRAME WITH FORMED CROSS MEMBER ANGLES

THIS PRINT CONTAINS CONFIDENTIAL INFORMATION AND IS THE SOLE PROPERTY OF MAINTAINER CORP. OF IOWA, INC. AND IS NOT TO BE COPIED OR REPRODUCED WITHOUT THE EXPRESSED WRITTEN PERMISSION OF MAINTAINER CORP. OF IOWA, INC.

LOS DIMENSIONS ARE IN INCHES GENERAL TOLERANCES		MATERIAL:	
BREAK ALL EDGES .01 X 45°	ANGULAR ± 1° .XX ± .03 .XXX ± .005	SCALE: 1:26	SIZE: B
LOS RADI	LOS ANGLES	DRAWING NUMBER: HH333-HH342	DFTM. LAG
MADE IN THE USA		H6520TT-1-084	HAG / STOCK - DODGE RAM

PROPRIETARY DATA PROPERTY OF MAINTAINER CORPORATION OF IOWA, INC.
 COPYRIGHT © 2002
Traintainer
 Corporation of Iowa, Inc.
 P.O. Box 349 1701 S. 2nd Avenue
 Sheldon, Iowa 51201
 DATE: 9/19/16

NOTE: 17 GALLON AIR STORAGE IN CHASSIS FRAME

SLOTTED BULKHEAD 9.00

TRAILER PLUG 7-PRONG FLAT BLADE