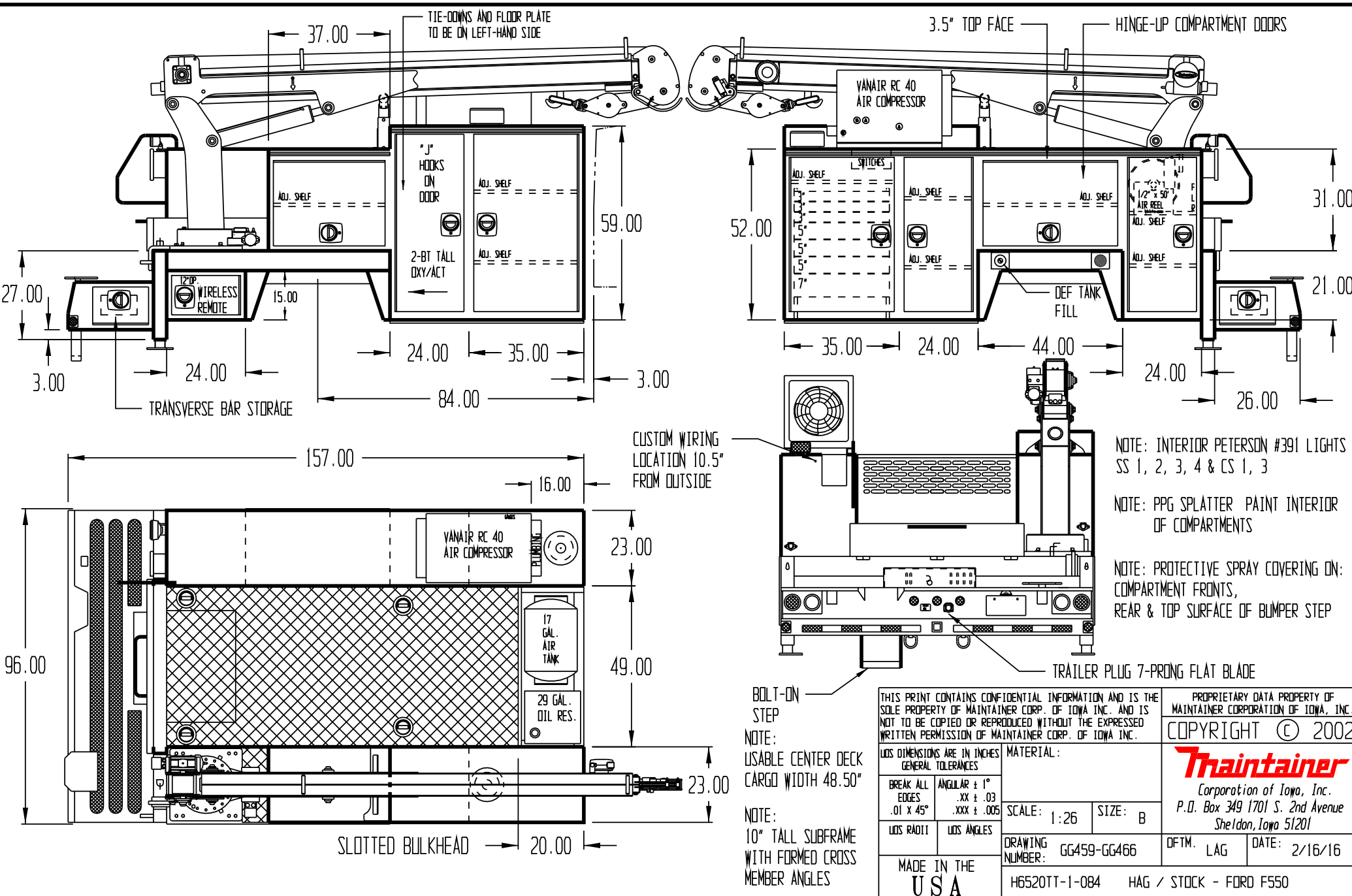


APPROVED BY \_\_\_\_\_

DATE \_\_\_\_\_

PAINT CODE \_\_\_\_\_

Z1 OXFORD WHITE



NOTE: INTERIOR PETERSON #391 LIGHTS SS 1, 2, 3, 4 & CS 1, 3

NOTE: PPG SPLATTER PAINT INTERIOR OF COMPARTMENTS

NOTE: PROTECTIVE SPRAY COVERING ON: COMPARTMENT FRONTS, REAR & TOP SURFACE OF BUMPER STEP

BOLT-ON STEP  
NOTE: USABLE CENTER DECK CARGO WIDTH 48.50"  
NOTE: 10" TALL SUBFRAME WITH FORMED CROSS MEMBER ANGLES

THIS PRINT CONTAINS CONFIDENTIAL INFORMATION AND IS THE SOLE PROPERTY OF MAINTAINER CORP. OF IOWA INC. AND IS NOT TO BE COPIED OR REPRODUCED WITHOUT THE EXPRESSED WRITTEN PERMISSION OF MAINTAINER CORP. OF IOWA INC.		PROPRIETARY DATA PROPERTY OF MAINTAINER CORPORATION OF IOWA, INC.	
LOS DIMENSIONS ARE IN INCHES GENERAL TOLERANCES		COPYRIGHT © 2002	
BREAK ALL EDGES .01 X 45°	ANGULAR ± 1° .XX ± .03 .XXX ± .005	MATERIAL:	<b>Thaintainer</b> Corporation of Iowa, Inc. P.O. Box 349 1701 S. 2nd Avenue Sheldon, Iowa 51201
LOS RADII	LOS ANGLES	SCALE: 1:26	SIZE: B
DRAWING NUMBER: GG459-GG466		DFTM. LAG	DATE: 2/16/16
MADE IN THE USA		H6520TT-1-084 HAG / STOCK - FORD F550	