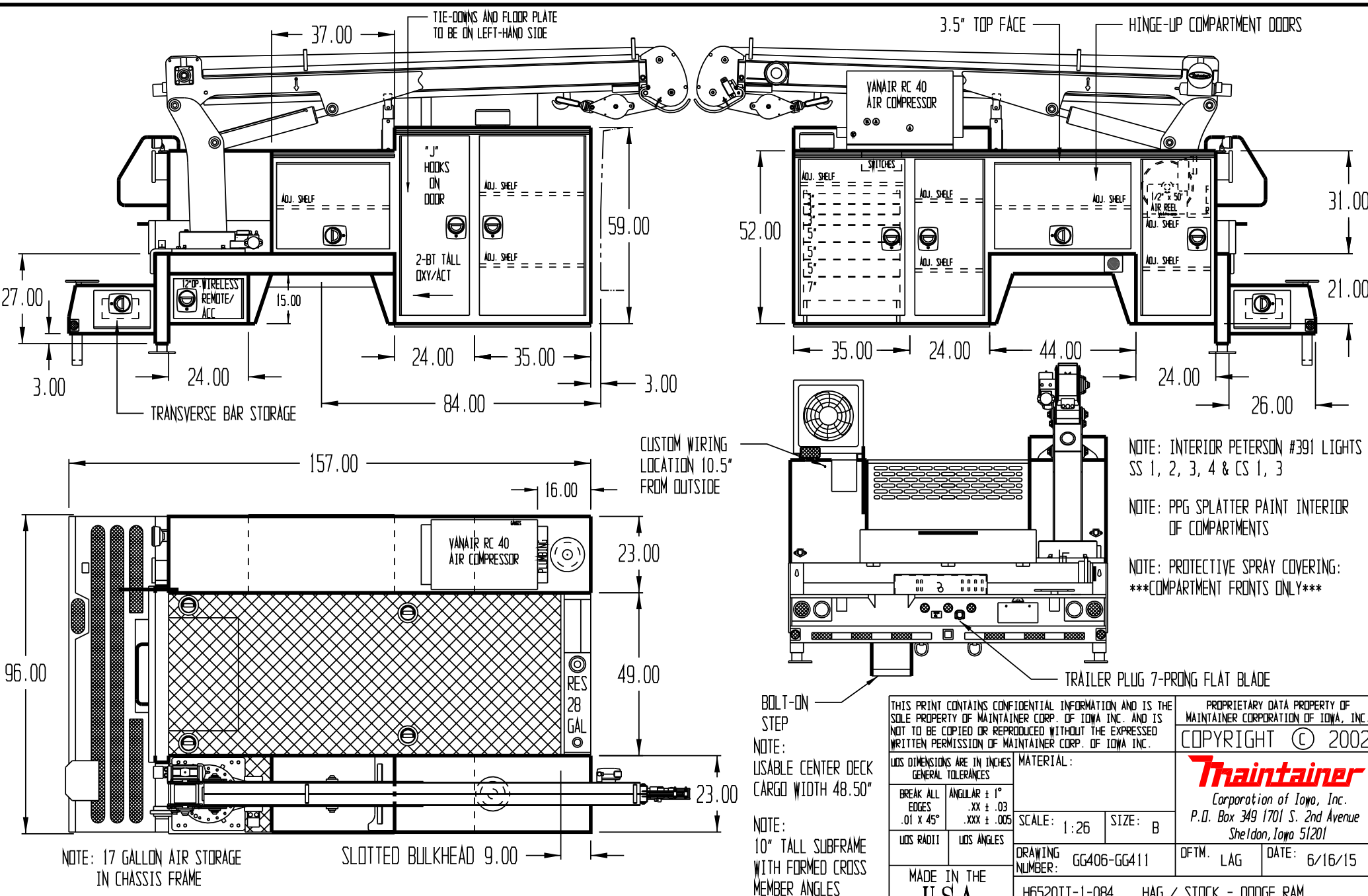


APPROVED BY _____

DATE _____

PAINT CODE _____

PW7 BRIGHT WHITE



NOTE: INTERIOR PETERSON #391 LIGHTS SS 1, 2, 3, 4 & CS 1, 3

NOTE: PPG SPLATTER PAINT INTERIOR OF COMPARTMENTS

NOTE: PROTECTIVE SPRAY COVERING: ***COMPARTMENT FRONTS ONLY***

BOLT-ON STEP

NOTE: USABLE CENTER DECK CARGO WIDTH 48.50"

NOTE: 10" TALL SUBFRAME WITH FORMED CROSS MEMBER ANGLES

THIS PRINT CONTAINS CONFIDENTIAL INFORMATION AND IS THE SOLE PROPERTY OF MAINTAINER CORP. OF IOWA INC. AND IS NOT TO BE COPIED OR REPRODUCED WITHOUT THE EXPRESSED WRITTEN PERMISSION OF MAINTAINER CORP. OF IOWA INC.

LOS DIMENSIONS ARE IN INCHES GENERAL TOLERANCES

| | |
|---------------------------|------------------------------------|
| BREAK ALL EDGES .01 X 45° | ANGULAR ± 1° .XX ± .03 .XXX ± .005 |
| LOS RADI | LOS ANGLES |

MADE IN THE USA

PROPRIETARY DATA PROPERTY OF MAINTAINER CORPORATION OF IOWA, INC.

COPYRIGHT © 2002

Thaintainer
Corporation of Iowa, Inc.
P.O. Box 349 1701 S. 2nd Avenue
Sheldon, Iowa 51201

| | |
|-----------------------------|-------------------------|
| SCALE: 1:26 | SIZE: B |
| DRAWING NUMBER: GG406-GG411 | DFTM. LAG DATE: 6/16/15 |

H6520TT-1-084 HAG / STOCK - DODGE RAM

NOTE: 17 GALLON AIR STORAGE IN CHASSIS FRAME

SLOTTED BULKHEAD 9.00

CUSTOM WIRING LOCATION 10.5" FROM OUTSIDE

TRAILER PLUG 7-PRONG FLAT BLADE