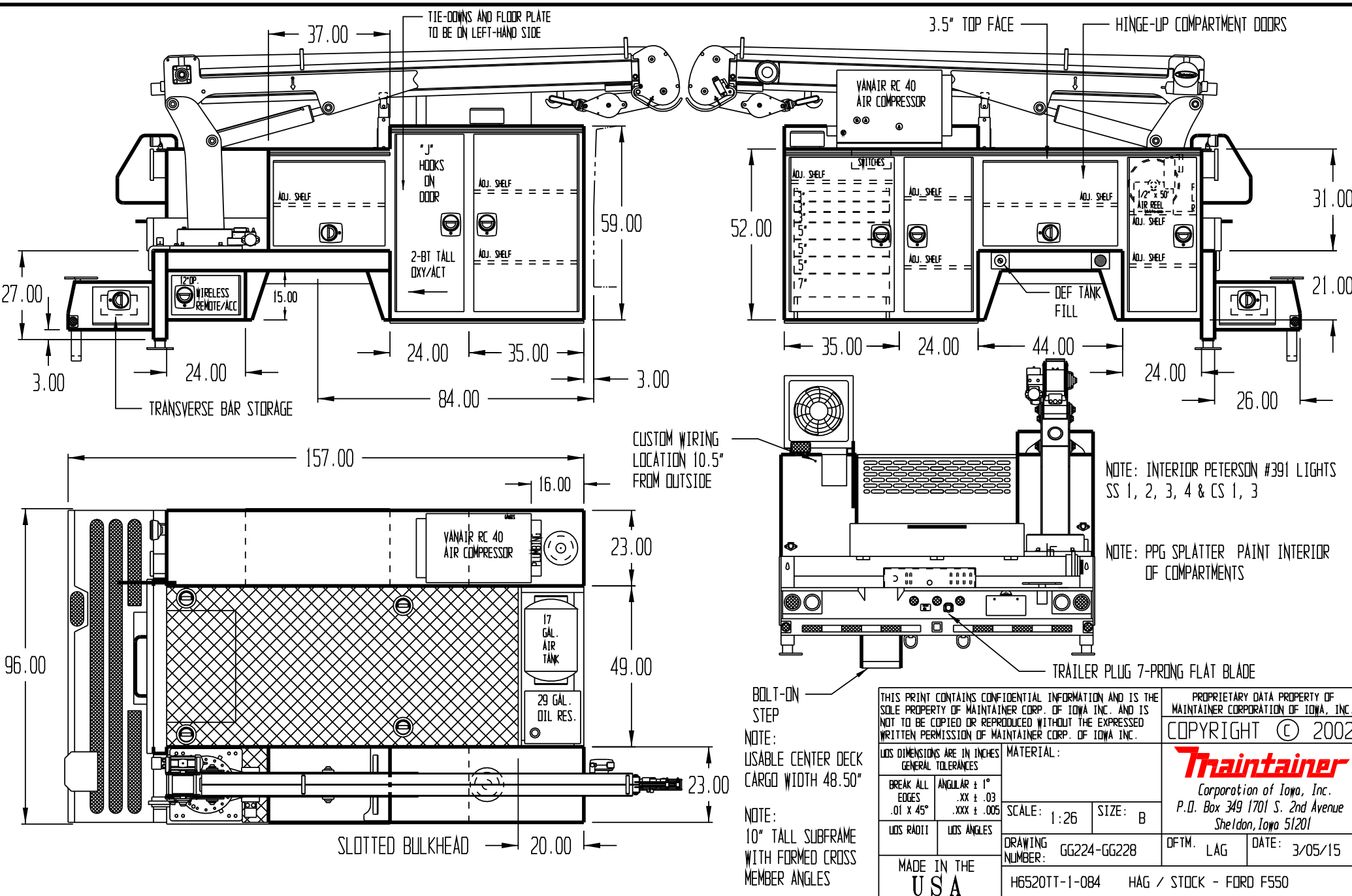


APPROVED BY _____

DATE _____

PAINT CODE _____

Z1 OXFORD WHITE



NOTE: INTERIOR PETERSON #391 LIGHTS SS 1, 2, 3, 4 & CS 1, 3

NOTE: PPG SPLATTER PAINT INTERIOR OF COMPARTMENTS

BOLT-ON STEP
 NOTE: USABLE CENTER DECK CARGO WIDTH 48.50"
 NOTE: 10" TALL SUBFRAME WITH FORMED CROSS MEMBER ANGLES

THIS PRINT CONTAINS CONFIDENTIAL INFORMATION AND IS THE SOLE PROPERTY OF MAINTAINER CORP. OF IOWA INC. AND IS NOT TO BE COPIED OR REPRODUCED WITHOUT THE EXPRESSED WRITTEN PERMISSION OF MAINTAINER CORP. OF IOWA INC.

| | | | |
|--|--|---------------------------------------|-----------|
| LOS DIMENSIONS ARE IN INCHES GENERAL TOLERANCES | | MATERIAL: | |
| BREAK ALL EDGES .01 X 45° | ANGULAR ± 1° .XX ± .03 .XXX ± .005 | SCALE: 1:26 | SIZE: B |
| LOS RADII | LOS ANGLES | DRAWING NUMBER: GG224-GG228 | DFTM. LAG |
| MADE IN THE USA | | H6520TT-1-084 HAG / STOCK - FORD F550 | |

PROPRIETARY DATA PROPERTY OF MAINTAINER CORPORATION OF IOWA, INC.
 COPYRIGHT © 2002
Traintainer
 Corporation of Iowa, Inc.
 P.O. Box 349 1701 S. 2nd Avenue
 Sheldon, Iowa 51201
 DATE: 3/05/15