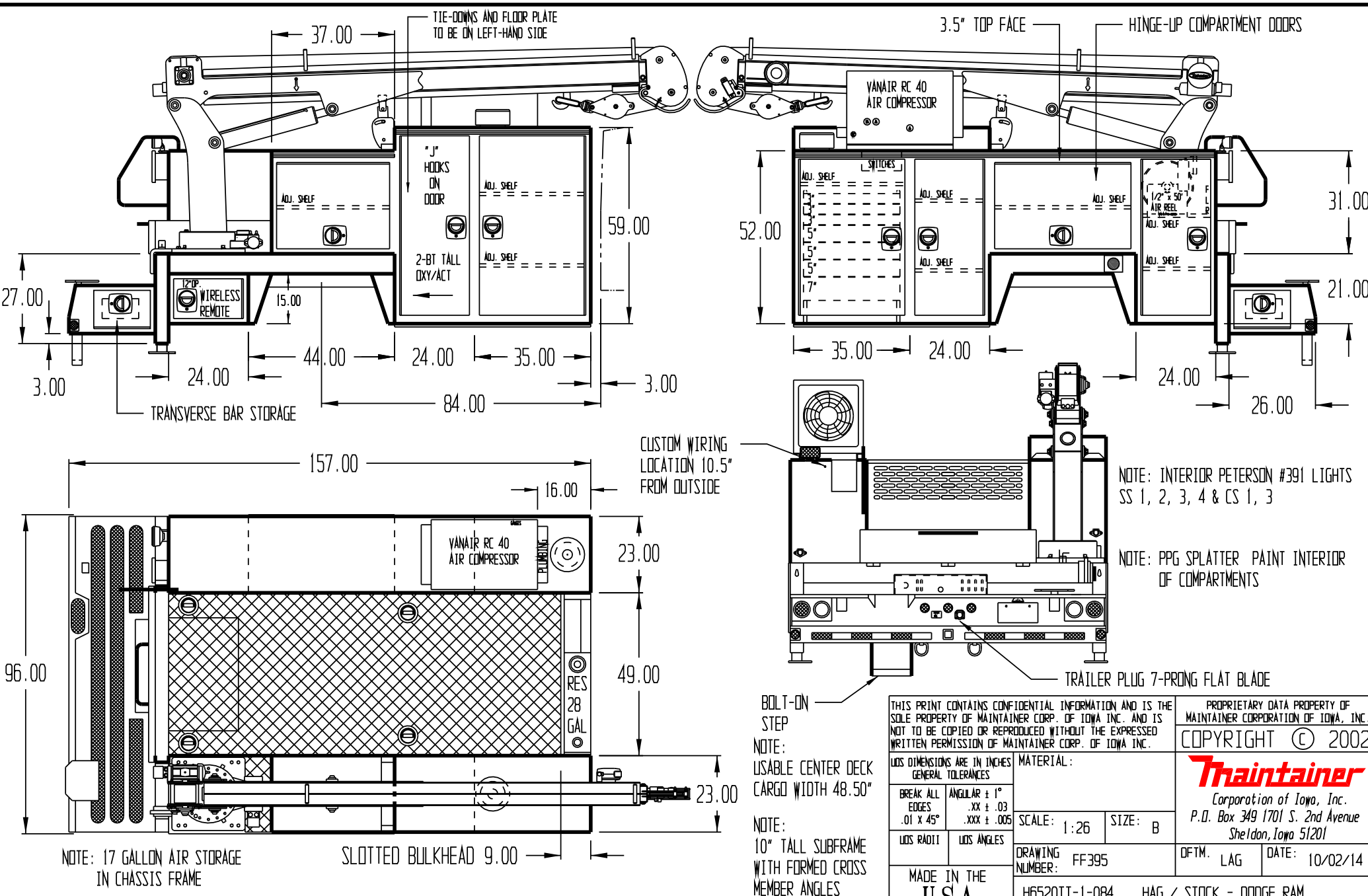


APPROVED BY \_\_\_\_\_

DATE \_\_\_\_\_

PAINT CODE \_\_\_\_\_

PW7 BRIGHT WHITE



TIE-DOWNS AND FLOOR PLATE TO BE ON LEFT-HAND SIDE

3.5" TOP FACE

HINGE-UP COMPARTMENT DOORS

YANAIR RC 40 AIR COMPRESSOR

"J" HOOKS ON DOOR

2-BT TALL OXY/ACT

12PDP WIRELESS REMOTE

TRANSVERSE BAR STORAGE

CUSTOM WIRING LOCATION 10.5" FROM OUTSIDE

YANAIR RC 40 AIR COMPRESSOR

RES 28 GAL

TRAILER PLUG 7-PRONG FLAT BLADE

NOTE: INTERIOR PETERSON #391 LIGHTS SS 1, 2, 3, 4 & CS 1, 3

NOTE: PPG SPLATTER PAINT INTERIOR OF COMPARTMENTS

NOTE: 17 GALLON AIR STORAGE IN CHASSIS FRAME

SLOTTED BULKHEAD 9.00

BOLT-ON STEP  
NOTE: USABLE CENTER DECK CARGO WIDTH 48.50"

NOTE: 10" TALL SUBFRAME WITH FORMED CROSS MEMBER ANGLES

THIS PRINT CONTAINS CONFIDENTIAL INFORMATION AND IS THE SOLE PROPERTY OF MAINTAINER CORP. OF IOWA INC. AND IS NOT TO BE COPIED OR REPRODUCED WITHOUT THE EXPRESSED WRITTEN PERMISSION OF MAINTAINER CORP. OF IOWA INC.

PROPRIETARY DATA PROPERTY OF MAINTAINER CORPORATION OF IOWA, INC. COPYRIGHT © 2002

MATERIAL:		SCALE: 1:26		SIZE: B	
BREAK ALL EDGES .01 X 45°	ANGULAR ± 1° .XX ± .03 .XXX ± .005	DRAWING NUMBER: FF395		DFTM. LAG	
LOD DIMENSIONS ARE IN INCHES GENERAL TOLERANCES		DATE: 10/02/14			

**Maintainer**  
Corporation of Iowa, Inc.  
P.O. Box 349 1701 S. 2nd Avenue  
Sheldon, Iowa 51201

MADE IN THE USA H6520TT-1-084 HAG / STOCK - DODGE RAM