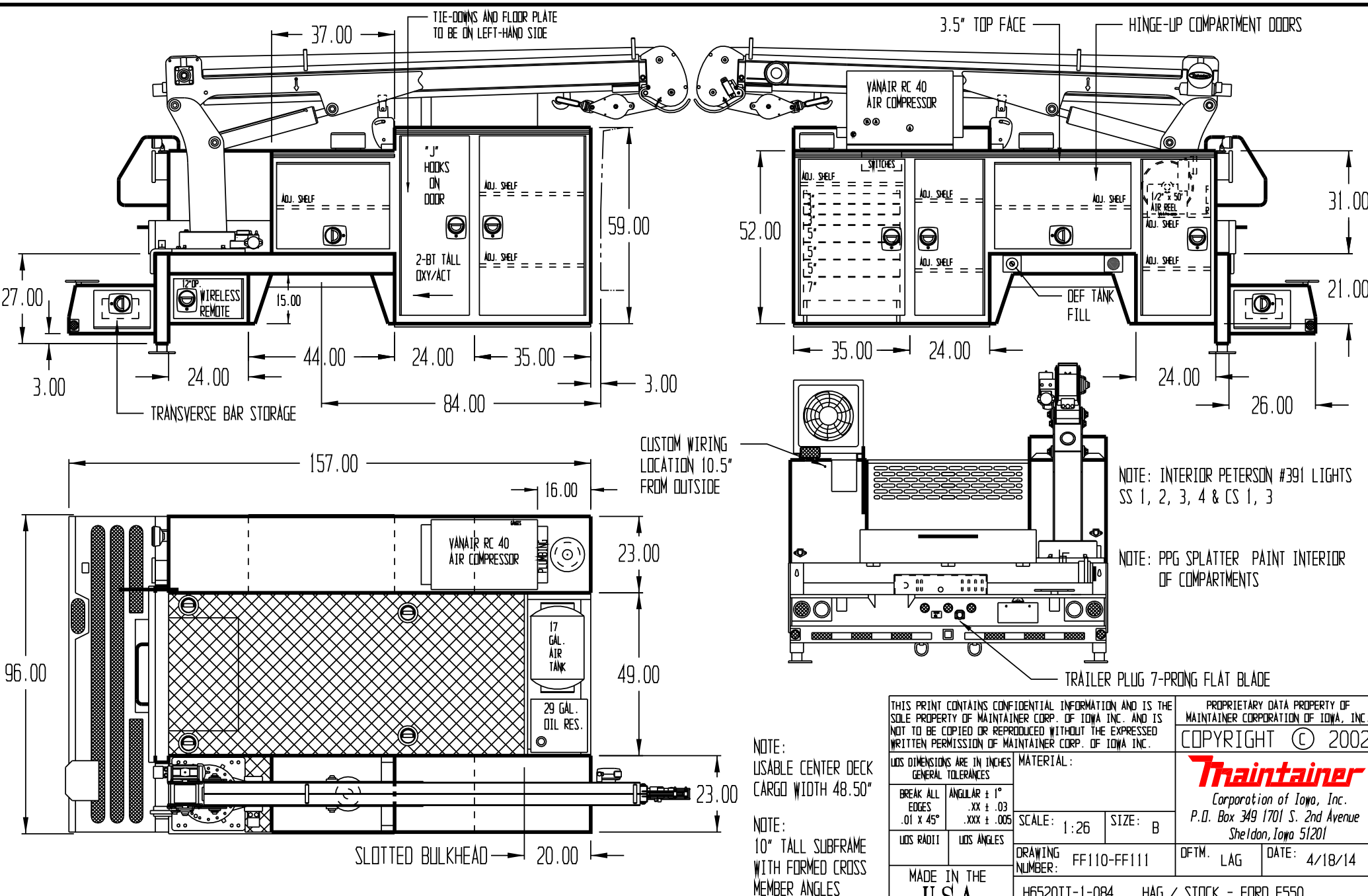


APPROVED BY \_\_\_\_\_

DATE \_\_\_\_\_

PAINT CODE \_\_\_\_\_

Z1 OXFORD WHITE



CUSTOM WIRING LOCATION 10.5" FROM OUTSIDE

NOTE: INTERIOR PETERSON #391 LIGHTS SS 1, 2, 3, 4 & CS 1, 3

NOTE: PPG SPLATTER PAINT INTERIOR OF COMPARTMENTS

TRAILER PLUG 7-PRONG FLAT BLADE

NOTE: USABLE CENTER DECK CARGO WIDTH 48.50"

NOTE: 10" TALL SUBFRAME WITH FORMED CROSS MEMBER ANGLES

THIS PRINT CONTAINS CONFIDENTIAL INFORMATION AND IS THE SOLE PROPERTY OF MAINTAINER CORP. OF IOWA INC. AND IS NOT TO BE COPIED OR REPRODUCED WITHOUT THE EXPRESSED WRITTEN PERMISSION OF MAINTAINER CORP. OF IOWA INC.				PROPRIETARY DATA PROPERTY OF MAINTAINER CORPORATION OF IOWA, INC. COPYRIGHT © 2002	
LOS DIMENSIONS ARE IN INCHES GENERAL TOLERANCES		MATERIAL:			
BREAK ALL EDGES .01 X 45°	ANGULAR ± 1° .XX ± .03 .XXX ± .005	SCALE: 1:26	SIZE: B		
LOS RADII	LOS ANGLES	DRAWING NUMBER: FF110-FF111	DFTM. LAG	DATE: 4/18/14	
MADE IN THE USA		H6520TT-1-084 HAG / STOCK - FORD F550			

***Traintainer***  
 Corporation of Iowa, Inc.  
 P.O. Box 349 1701 S. 2nd Avenue  
 Sheldon, Iowa 51201