



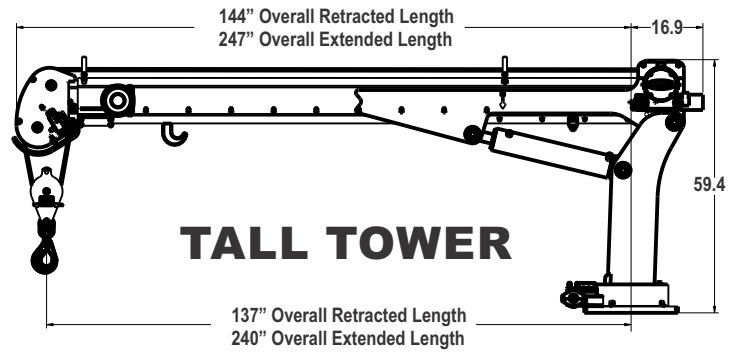
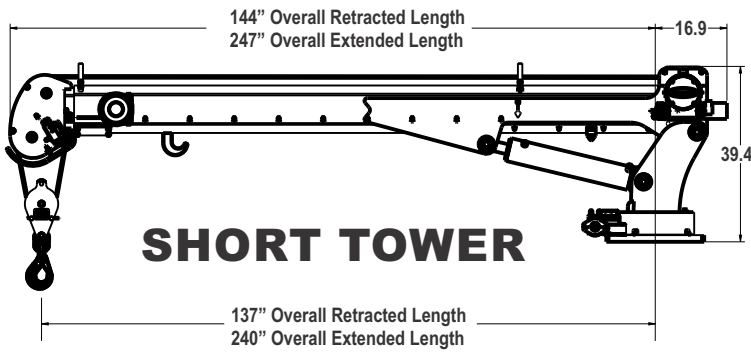
Maintainer

H6520 CRANE



WITHIN 10 FEET OF
HIGH VOLTAGE LINES OF
30,000 VOLTS OR LESS

specifications



features:

- “Boom Mounted” Gear Winch - 30 fpm
- Dual Part Line (Single Part Capable)
- Weight—1,600 lb.
- Total Operational Range 91° (-13 to +78)
- Double Sheave Design
- Wireless Remote Control
- 615° Rotation
- 20 ft. Hydraulic Reach
- Anti-Two Block Relocation (Inboard)
- 105 ft. of 3/8 in dia. Steel Cable
- Hexagonal Boom
- Tall and Short Tower Configurations
- Closed-center/Load-sensing Hydraulic System
- OSHA 1910.180 / ANSI B30.5 Compliant
- Advanced Crane Control - Standard



options:

- Open-center Hydraulic System
- Planetary Winch - 60 fpm

ratings:

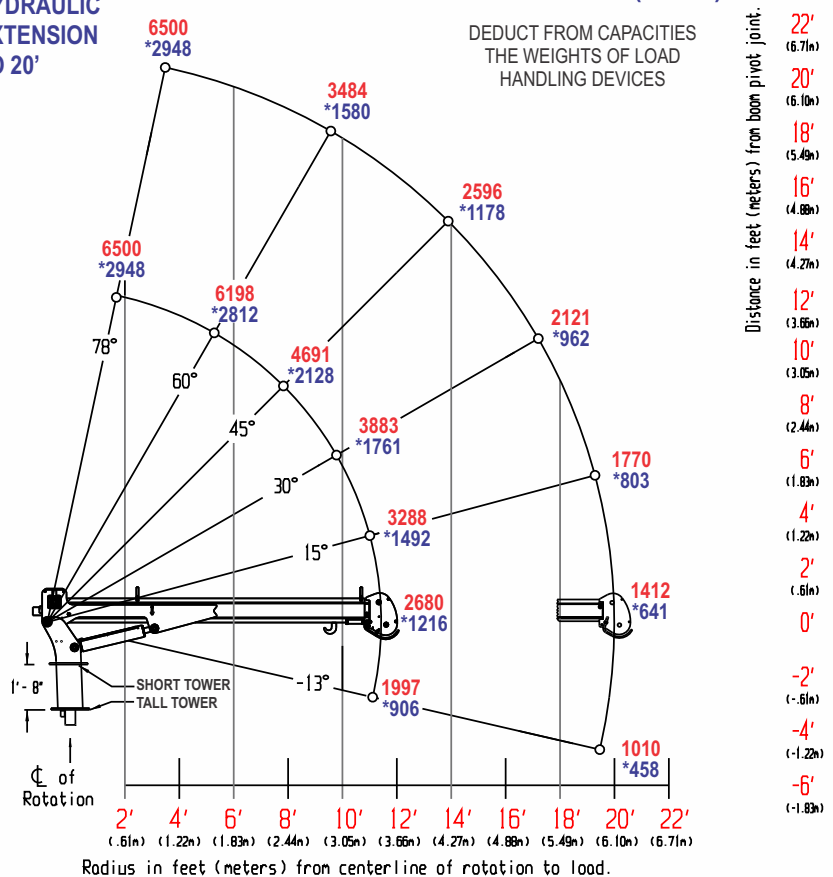
H6520 CRANE CAPACITY CHART 38,000 FT*LB CRANE RATING

MAX SINGLE LINE CAPACITY IS 4300 LBS. (1950 KG)
FOR GREATER LOADS USE 2 PART LINE
OUTRIGGERS MUST BE EXTENDED AND DOWN

CAPACITIES ARE IN LBS. (*KGS.)

HYDRAULIC
EXTENSION
TO 20'

DEDUCT FROM CAPACITIES
THE WEIGHTS OF LOAD
HANDLING DEVICES



www.

Maintainer.com

MAINTAINER CORPORATION OF IOWA, INC.
1701 2nd Avenue | Sheldon, Iowa 51201 | Ph: 800-831-8588