

LIFTMOORE 6036WX CRANE

**36,000 FT.-LB. MOMENT RATING
6000 LB. MAXIMUM CAPACITY**

24 V.D.C.

Liftmoore's 6036WX is our largest all electric powered crane. This crane is designed for heavy lifting and precision spotting as needed by field mechanics repairing road machinery and many other large machine units.

Moment rating of the 6036WX is 36,000 ft.-lbs. with a maximum lifting capacity of 6000 lbs. at a 6 ft. load radius.

This model features a 4 stage planetary gear winch, the most efficient possible lifting mechanism for this type of equipment. Single line, no load line speed is 35 feet per minute.

The 6036WX utilizes 24 Volt DC operation for more efficient power transmission. An equalizer charger is supplied for charging the 24 Volt system. Rotation is continuous and unlimited. No mechanical stops are required.

Rotation is powered through a worm gearbox for positive locking. The crane rotates on a gear bearing slewing ring.

The remote pistol grip type pendant provides efficient one man operation and control of the crane.

Optional 4' Manual Extension

Anti Two-Block

Traveling Block with Swivel Hook

Model 6036WX-20
(Shown)

WARNING: Liftmoore Cranes
Are Not To Be Used To Lift, Support
Or Move Personnel

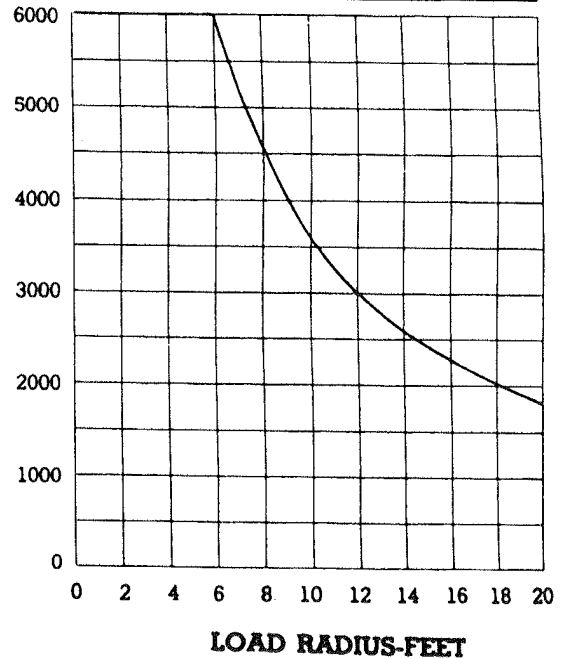
24 V.D.C.
4-Stage Planetary Gear Winch

Remote Pendant Control

Worm Gear
Rotation Drive

Continuous Rotation
on Ball Slewing Ring

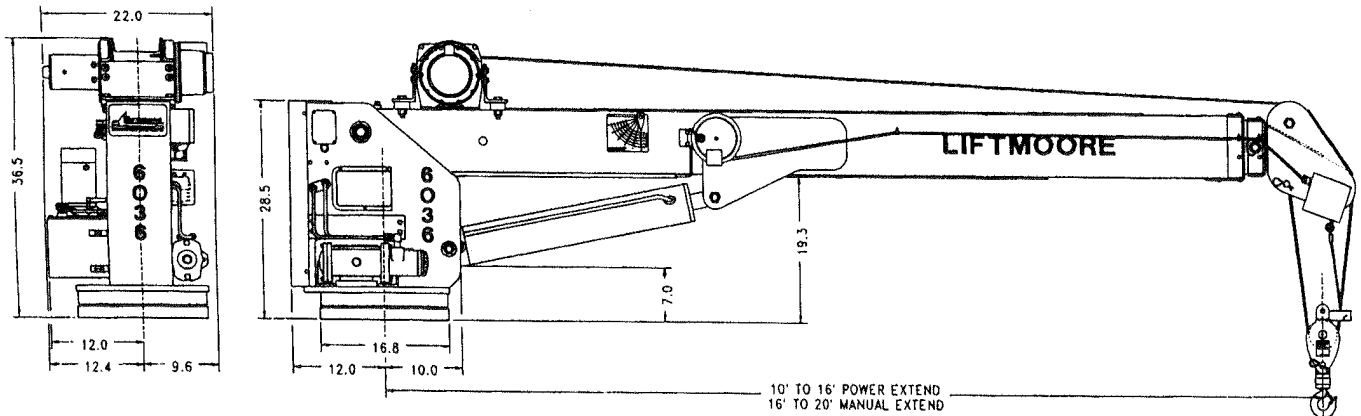
LOAD-POUNDS



LIFTMOORE, INC.
Houston, Texas 77040
FAX (800) 824-5559 (USA & Canada)
FAX (713) 688-6324
(713) 688-5533
www.liftmoore.com

LIFTMOORE
TRUCK CRANES
Up to 10,000 lb. Capacity Cranes

6036WX SPECIFICATIONS



Moment Rating:

36,000 Ft.-Lb.

Lift Capacities:

6000 lbs. @ 6 ft.	2520 lbs. @ 14 ft.
4500 lbs. @ 8 ft.	2250 lbs. @ 16 ft.
3600 lbs. @ 10 ft.	2000 lbs. @ 18 ft.
3000 lbs. @ 12 ft.	1800 lbs. @ 20 ft.

Boom:

Standard length is 10 ft. to 16 ft. with power extension. An optional 4 ft. manual pull out extension to 20 ft. is offered. Powered extension booms include nylatron slide pads to reduce friction. An integrally mounted counterbalance valve is included with the cylinder for positive load holding. The boom angle varies from -5 to +75 degrees powered by a 4.5 in. diameter double acting hydraulic cylinder with counterbalance valve.

Hoist Winch:

The hoist winch is planetary gear driven for the most efficient operation in the industry. The winch is powered by a 2.5 HP 24 Volt DC series wound electric motor. Single line no load speed of the winch is 35 feet per minute. Winch drum to wire line ratio meets ANSI requirements.

Winch Wire Rope and Block:

1/4 in. Galvanized Aircraft Cable 85 ft. long (100 ft. on 20 ft. Boom) is supplied. Cable breaking strength is 7000 lbs. and conforms to ANSI requirements. A traveling block is supplied for use on single, double or triple line rigging. The block includes a roller thrust bearing swivel hook for easier rotation of the load.

Rotation:

A 45:1 worm gear speed reducer driven by a low speed, high torque hydraulic motor powers the crane's rotation. The 6036WX rotates on a gear bearing slewing ring. An electric swivel allows 360 degree continuous and unlimited rotation.

Power Source:

This crane operates on a 24 Volt DC operating system. An equalizer charger is included for charging with standard 12 Volt truck systems. Two 12 volt batteries (not supplied) for series operation are required. Group 31 deep cycle batteries are recommended for this purpose. A master cutoff switch, quick disconnect, circuit breaker and battery wire for standard truck installation are supplied.

Remote Pendant:

All powered functions are controlled by a remote pendant control that is 25 ft. long. The pendant control is removable from the crane. All switches used in the pendant are momentary contact type.

Load Sensor:

A load sensor is standard on the 6036WX. The load sensor will not allow hoist up, boom down or extension out when an overload is detected.

Anti Two-Block:

The 6036WX is supplied with an anti two-block device that prevents extending the boom against the traveling block. The anti two-block stops boom out, boom down and hoist winch up.

Mounting:

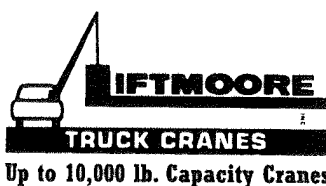
Four 7/8" Grade 8 bolts are required. Bolts are not included. The crane mounts on a 16-3/4 in. square base plate with a 14-3/4 in. square bolt pattern.

Weight:

6036WX-16 Actual 1500 lbs. 6036WX-20 Actual 1550 lbs.

Optional Accessories:

Outrigger - Manual pull out, crank up/down
 Outrigger - Manual pull out, hydraulic up/down
 Pedestal
 Boom Rest
 Jack Stand



LIFTMOORE, INC.
 Houston, Texas 77040
 FAX (800) 824-5559 (USA & Canada)
 FAX (713) 688-6324
 (713) 688-5533
www.liftmoore.com