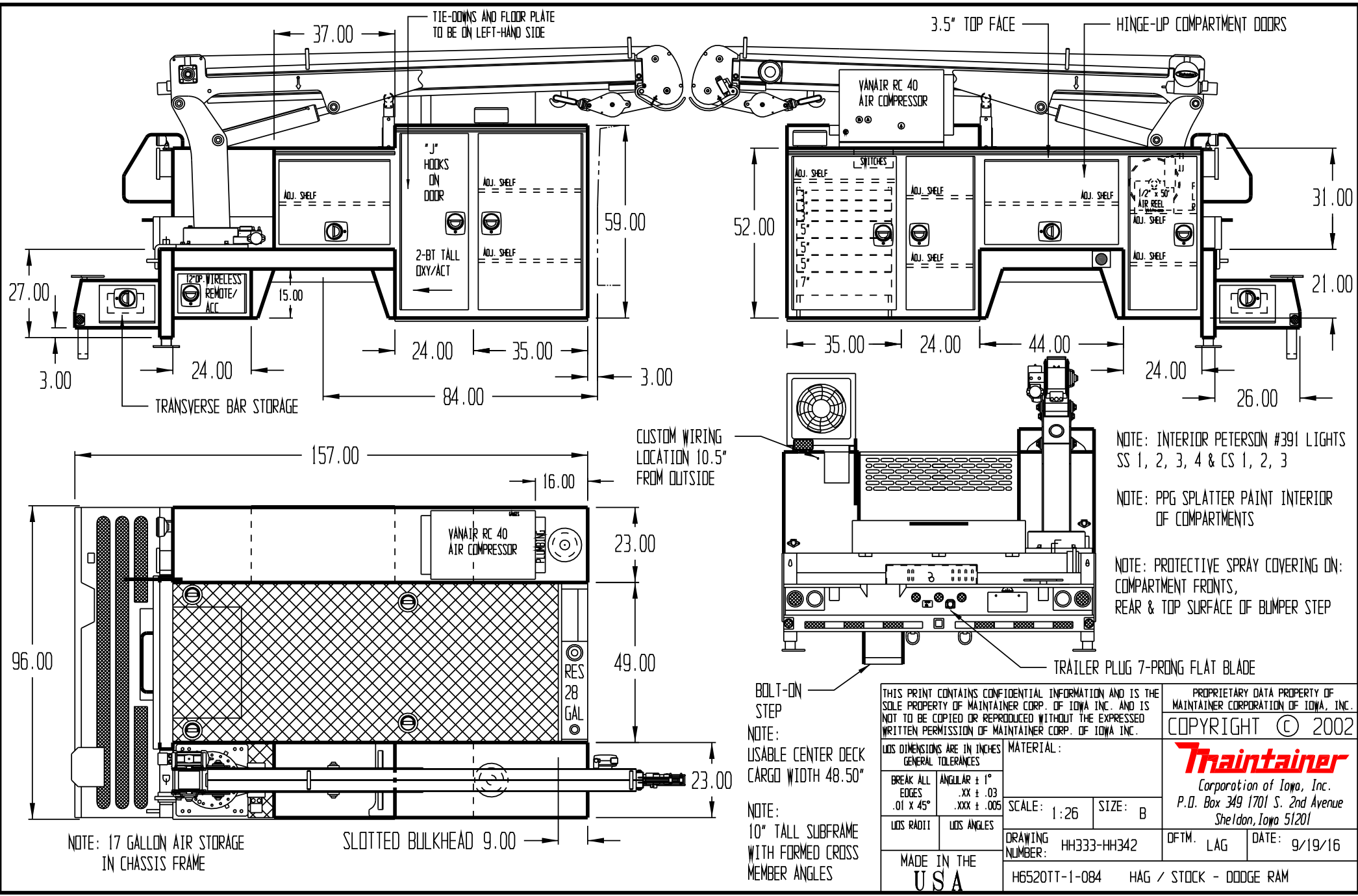


APPROVED BY \_\_\_\_\_

DATE \_\_\_\_\_

PAINT CODE \_\_\_\_\_

PW7 BRIGHT WHITE



NOTE: INTERIOR PETERSON #391 LIGHTS SS 1, 2, 3, 4 & CS 1, 2, 3

NOTE: PPG SPLATTER PAINT INTERIOR OF COMPARTMENTS

NOTE: PROTECTIVE SPRAY COVERING ON: COMPARTMENT FRONTS, REAR & TOP SURFACE OF BUMPER STEP

BOLT-ON STEP  
 NOTE:  
 USABLE CENTER DECK CARGO WIDTH 48.50"  
 NOTE:  
 10" TALL SUBFRAME WITH FORMED CROSS MEMBER ANGLES

TRAILER PLUG 7-PRONG FLAT BLADE

THIS PRINT CONTAINS CONFIDENTIAL INFORMATION AND IS THE SOLE PROPERTY OF MAINTAINER CORP. OF IOWA INC. AND IS NOT TO BE COPIED OR REPRODUCED WITHOUT THE EXPRESSED WRITTEN PERMISSION OF MAINTAINER CORP. OF IOWA INC.		PROPRIETARY DATA PROPERTY OF MAINTAINER CORPORATION OF IOWA, INC. COPYRIGHT © 2002	
LOD DIMENSIONS ARE IN INCHES GENERAL TOLERANCES		MATERIAL:	
BREAK ALL EDGES .01 X 45°	ANGULAR ± 1° .XX ± .03 .XXX ± .005	SCALE: 1:26	SIZE: B
LOD RADII	LOD ANGLES	DRAWING NUMBER: HH333-HH342	DFTM. LAG DATE: 9/19/16
MADE IN THE USA		H6520TT-1-084 HAG / STOCK - DODGE RAM	

**Maintainer**  
 Corporation of Iowa, Inc.  
 P.O. Box 349 1701 S. 2nd Avenue  
 Sheldon, Iowa 51201