

Maintainer

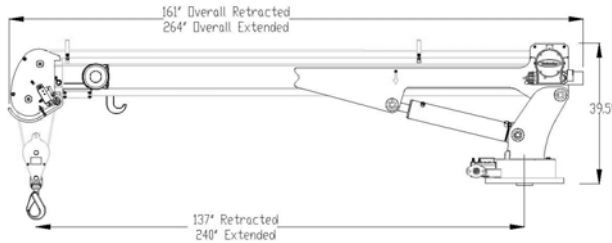


H6520 CRANE

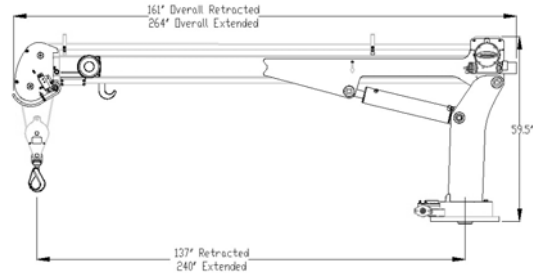


specifications

short tower



tall tower

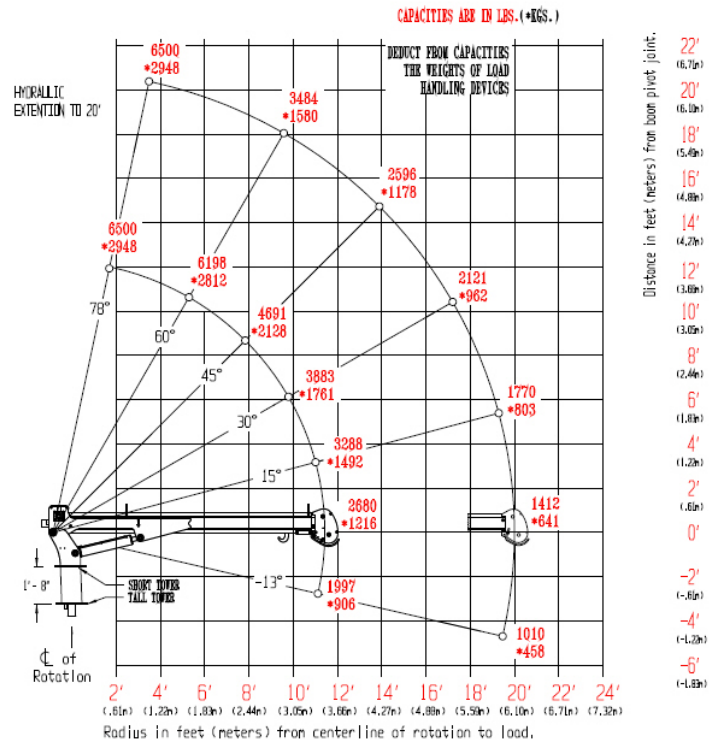


features

- “Boom Mounted” Gear Winch—30 fpm
- Dual Part Line (Single Part Capable)
- Weight—1,600 lb.
- Total Operational Range 91 deg. (-13 to +78)
- Double Sheave Design
- Anti-Two Block Relocation (Inboard)
- Wireless Remote Control System
- 105 ft. of 3/8 in dia. Steel Cable
- 615 deg. Rotation
- 20 ft. Hydraulic Reach
- Hexagonal Boom
- Tall and Short Tower Configurations
- Closed-center/Load-sensing Hydraulic System
- OSHA 1910.180 / ANSI B30.5 Compliant

ratings

Rated—38,000 ft./lb.



PRT 0014137

1701 S 2ND AVE SHELDON, IA 51201
800-831-8588
WWW.MAINTAINER.COM

816 3/04

options

- LMI System
- Planetary Winch—60 fpm
- Open-center Hydraulic System