

**Maintainer**

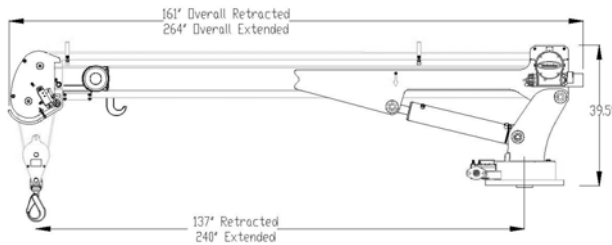


**H6520 CRANE**

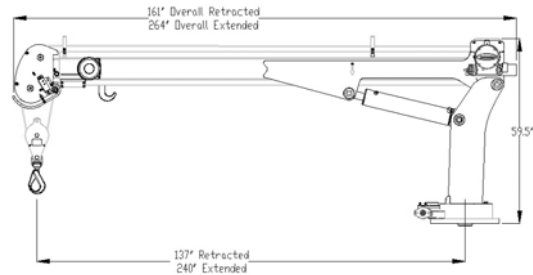


# specifications

## short tower



## tall tower

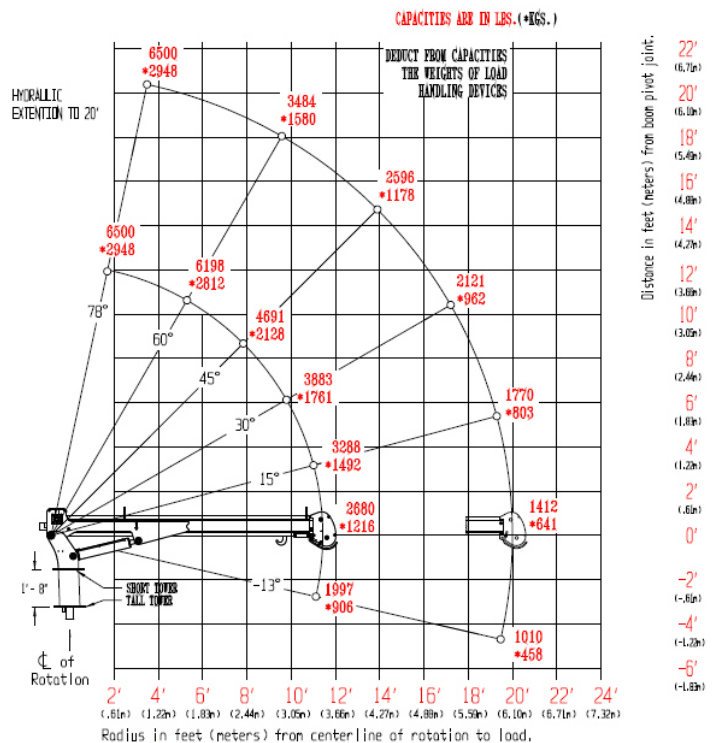


## features

- “Boom Mounted” Gear Winch—30 fpm
- Dual Part Line (Single Part Capable)
- Weight—1,600 lb.
- Total Operational Range 91 deg. (-13 to +78)
- Double Sheave Design
- Anti-Two Block Relocation (Inboard)
- Wireless Remote Control System
- 105 ft. of 3/8 in dia. Steel Cable
- 615 deg. Rotation
- 20 ft. Hydraulic Reach
- Hexagonal Boom
- Tall and Short Tower Configurations
- Closed-center/Load-sensing Hydraulic System
- OSHA 1910.180 / ANSI B30.5 Compliant

## ratings

**Rated—38,000 ft./lb.**



PRT 0014137

1701 S 2ND AVE SHELTON, IA 51201  
800-831-8588  
WWW.MAINTAINER.COM

816 3/04

## options

- LMI System
- Planetary Winch—60 fpm
- Open-center Hydraulic System