



## Features

- Maintainer Lube Body 12-GA Galvannealed A60
  - Enclosed Rear Reel Compartment
  - 3/16" Single Piece Aluminum Doors
  - Line-X Protective Spray Covering
  - Interior Strip & Exterior Flood Lighting
- Closed Center / Load Sensing Hydraulic System
  - One-Pump Multi Function Operation
- 25 CFM Hydraulic Air Compressor
- Used Filter Bin / Plumbed into Evac System
- Diesel Fuel Tank - 650 Gallon
  - Hydraulic 30-GPM Pump Kit w/ Meter
- (4) Four Oil Tanks - (2) 120 & (2) 60 Gallon
  - Each w/ Hydraulic 8-GPM Pump Kits
- Anti-Freeze Tank - 60 Gallon
  - Hydraulic 10-GPM Pump Kit
- Evac System Tank - 150 Gallon
  - Hydraulic Intake/Discharge Pump Kit
  - High Level Indicator on Evac Tank
- Grease System - 120# Drum
  - Air Pump Kit



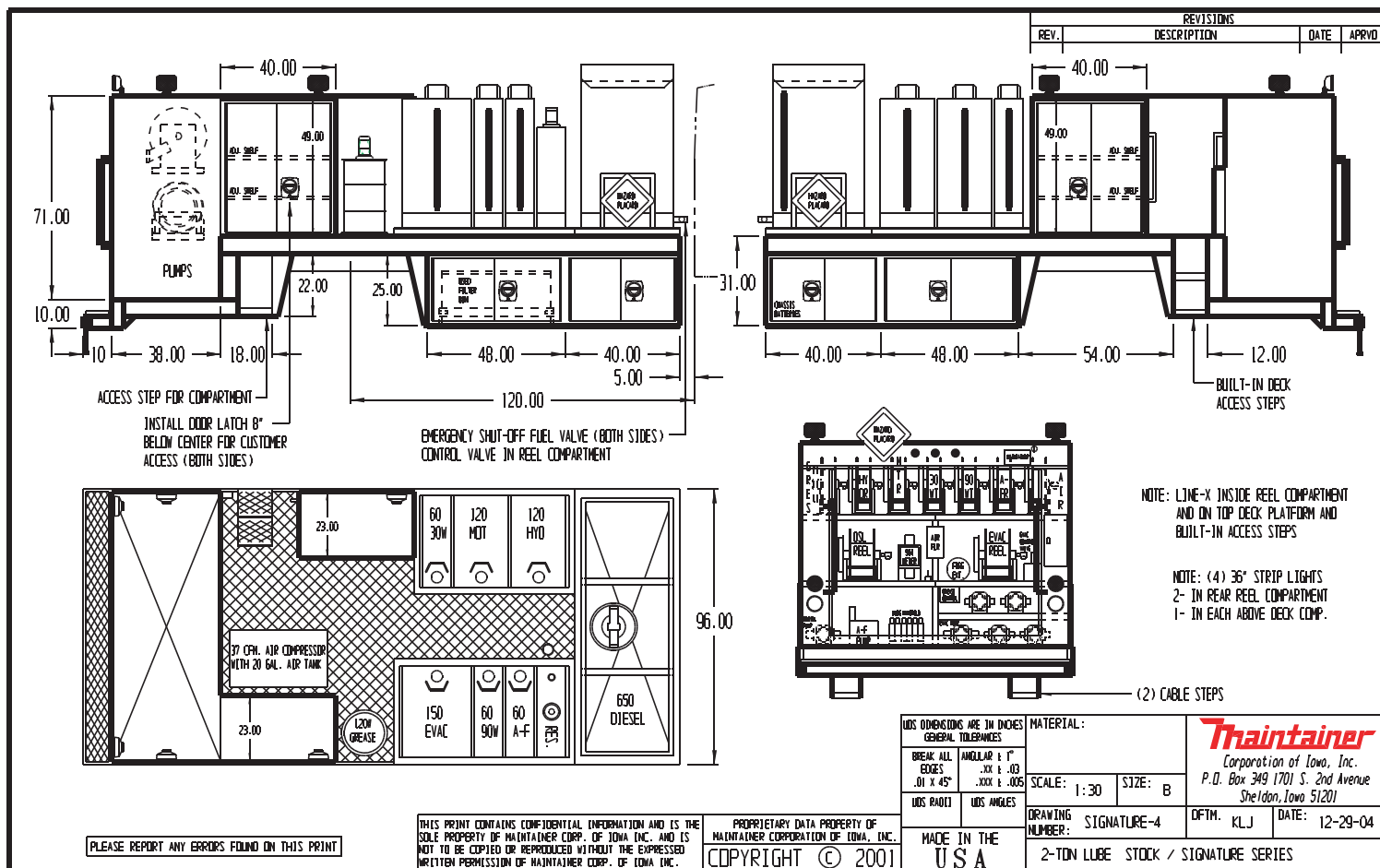
Minimum GVW 32,000

Maintainer Corporation of Iowa, Inc  
1701 S. 2nd Ave Sheldon, IA 51201  
800.831.8588 \* [www.maintainer.com](http://www.maintainer.com)

S  
I  
G  
N  
A  
T  
U  
R  
E  
  
#  
4

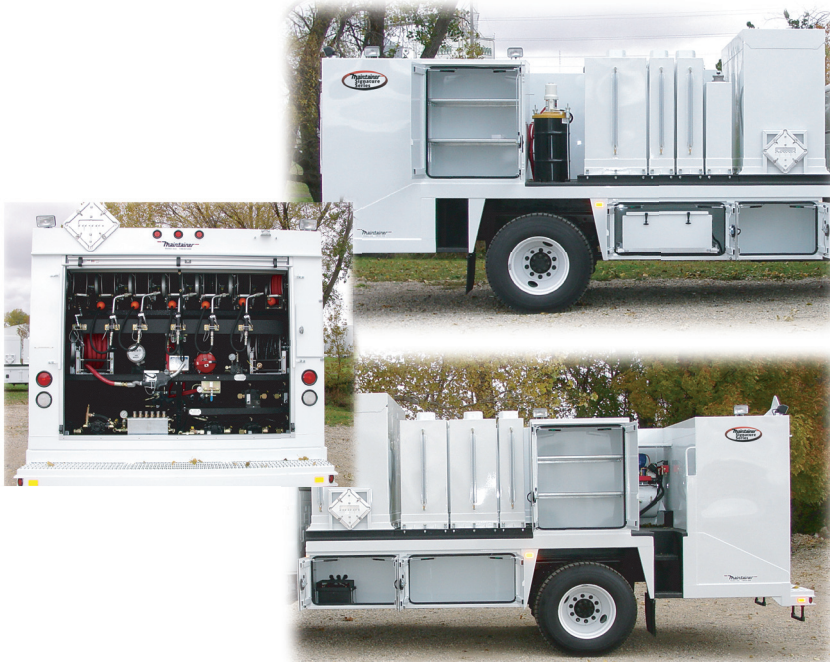
Copyright 2005

# Maintainer Signature Series 4 Lube Body



## List of options:

- Jump start system-12/24 volt w/cables (gas engine additional battery)
- LED tail, back-up and marker lighting
- EZ Latch Aluma drawers
- Used filter bin
- Air compressor
- Generators
- Hydraulic or air driven pumps



Maintainer Corporation of Iowa, Inc.  
 PO Box 349  
 Sheldon, IA 51201  
[www.maintainer.com](http://www.maintainer.com)  
 1.800.831.8588