



Features

- Maintainer 10000 Series Tall Tower Crane
 - Hexagonal Boom Design with 24' Hydraulic Reach
 - 10,000 lb. Maximum Capacity
 - Hydraulic Outriggers
- Maintainer 11' Service Body 12-GA Galvannealed A60
 - 3/16" Single Piece Aluminum Doors
 - Oxy/Act Storage / Welder Mount Angles SS Top Rear
 - Pressurized Storage System
 - 26" Workbench HD Bumper with Vise Mount
 - 4 Cargo Area Flush Mount Tie Downs
 - Line-X Protective Spray Covering
 - Interior Strip & Exterior Flood Lighting
- Closed Center / Load Sensing Hydraulic System
 - One-Pump Multi Function Operation
- 40 CFM Hydraulic Air Compressor
 - 1/2" x 50' Reel, FLR, 20 Gallon Air Tank
- Maintainer EZ Latch Alumina Drawers
 - 5-Drawer & 7-Drawer Sets

Meets OSHA
1910.180
requirements and
ANSI B30.5 safety
standards



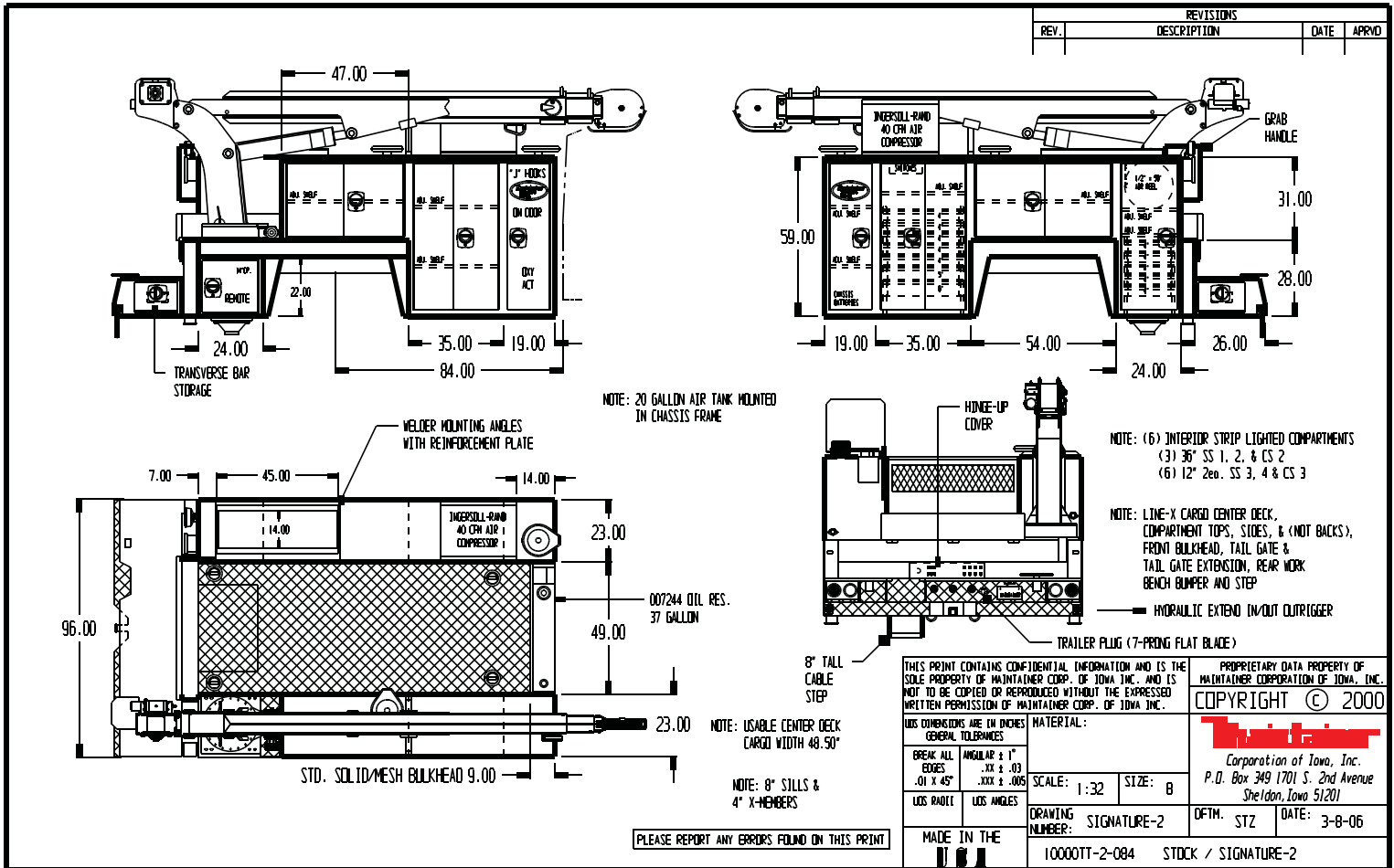
Minimum GVW 22,500

Maintainer Corporation of Iowa, Inc
1701 S. 2nd Ave Sheldon, IA 51201
800.831.8588 * www.maintainer.com

S
I
G
N
A
T
U
R
E

2

Maintainer Signature Series 2 Service Body



List of options:

- Planetary winch in lieu of worm gear on crane
- Radio-wireless crane remote control, includes: engine start-stop, engine speed control, proportional control and ship along 30' cable for backup
- Jump start system-12/24 volt w/cables (gas engine additional battery)
- Adjustable shelves
- LED tail, back-up and marker lighting
- 18 drawer bolt cabinet
- Removable divider panel in center deck
- Pintle hitch and receiver bracket
- Pintle hitch w/2" ball and receiver bracket
- Rear bumper tow hooks
- Vise/grinder removable mounting plate
- 5" Wilton vise
- Chain hanger bracket
- Welder face cut-out in compartment back wall w/drip pan and "J" hooks



Maintainer Corporation of Iowa, Inc.
 PO Box 349
 Sheldon, IA 51201
www.maintainer.com
 1.800.831.8588