



Meets OSHA  
1910.180  
requirements and  
ANSI B30.5 safety  
standards

## Features

- Maintainer 6000 Series Tall Tower Crane
  - Hexagonal Boom Design with 24' Hydraulic Reach
  - 6,350 lb. Maximum Capacity
  - Hydraulic Outriggers
- Maintainer 11' Service Body 12-GA Galvannealed A60
  - 3/16" Single Piece Aluminum Doors
  - 59" Tall Oxy/Act Storage
  - Pressurized Storage System
  - 26" Workbench HD Bumper with Vise Mount
  - 4 Cargo Area Flush Mount Tie Downs
  - Line-X Protective Spray Covering
  - Interior Strip & Exterior Flood Lighting
- Closed Center / Load Sensing Hydraulic System
  - One-Pump Multi Function Operation
- 40 CFM Hydraulic Air Compressor
  - 1/2" x 50' Reel, FLR, 20 Gallon Air Tank
- Maintainer EZ Latch Alumina Drawers
  - 5-Drawer & 7-Drawer Sets



Minimum GVW 17,500

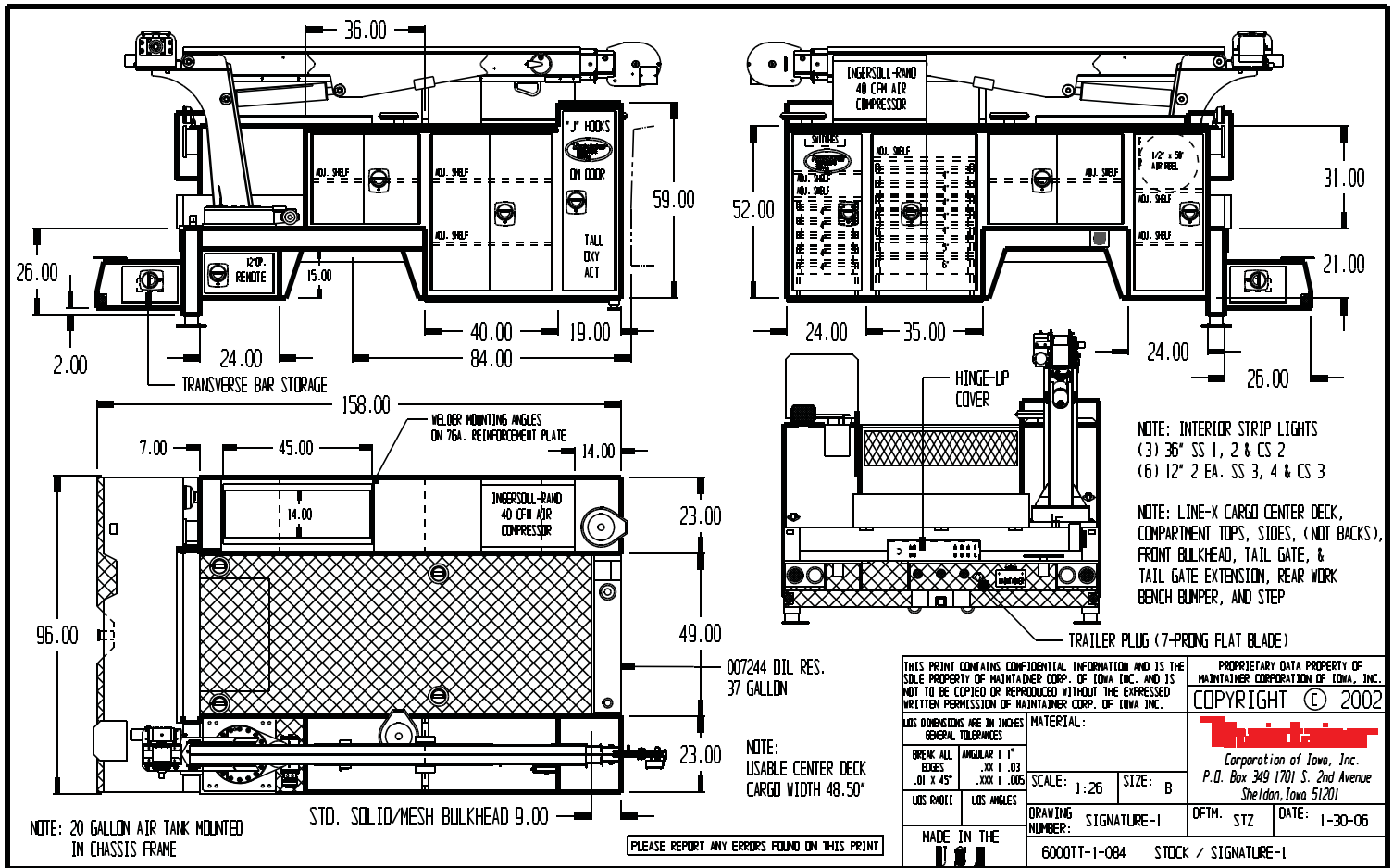
Maintainer Corporation of Iowa, Inc  
1701 S. 2nd Ave Sheldon, IA 51201  
800.831.8588 \* [www.maintainer.com](http://www.maintainer.com)

S  
I  
G  
N  
A  
T  
U  
R  
E

#  
1

Copyright 2005

# Maintainer Signature Series 1 Service Body



## List of options:

- Planetary winch in lieu of worm gear on crane
- Radio-wireless crane remote control, includes: engine start-stop, engine speed control, proportional control and ship along 30' cable for backup
- Jump start system-12/24 volt w/cables (gas engine additional battery)
- Adjustable shelves
- LED tail, back-up and marker lighting
- 18 drawer bolt cabinet
- Removable divider panel in center deck
- Pintle hitch and receiver bracket
- Pintle hitch w/2" ball and receiver bracket
- Rear bumper tow hooks
- Vise/grinder removable mounting plate
- 5" Wilton vise
- Chain hanger bracket
- Welder face cut-out in compartment back wall w/drip pan and "J" hooks



Maintainer Corporation of Iowa, Inc.  
 PO Box 349  
 Sheldon, IA 51201  
[www.maintainer.com](http://www.maintainer.com)  
 1.800.831.8588