

Maintainer

6000 Series Crane

Features

- 6,350 lb. lift capacity @ 6' from center line of rotation
- 24 feet hydraulic reach
- 615 degrees of rotation
- Hexagonal boom design
- Tall tower crane pedestal design (short tower optional)
- Closed center/load sensing hydraulics (open center optional)

Meets OSHA
1910.180
requirements and
ANSI B30.5 safety
standards

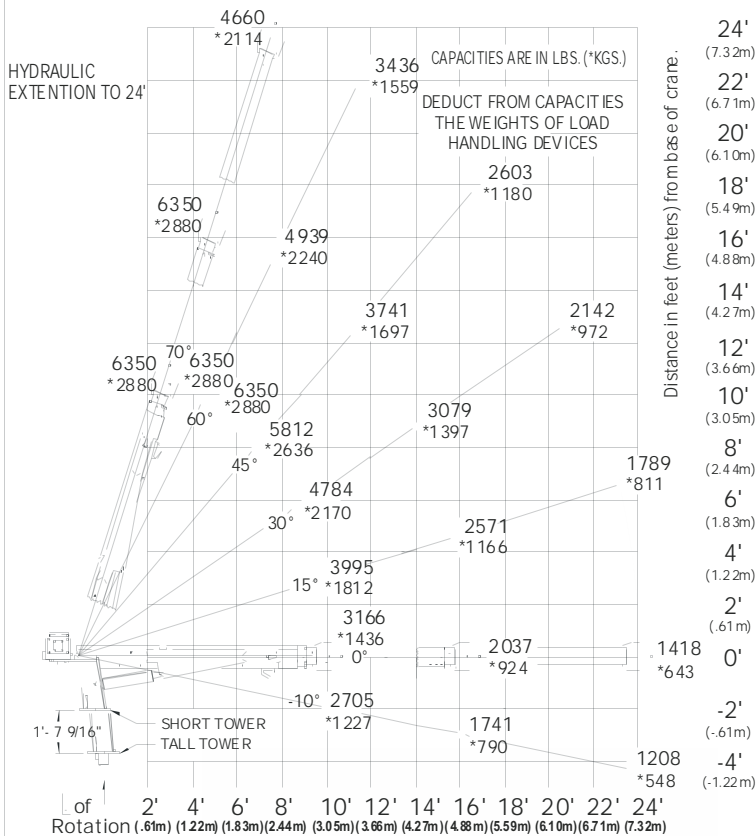


6
0
0
0
C
R
A
N
E



6000 SERIES CRANE CAPACITY CHART 45100 FT/LB CRANE RATING

MAX SINGLE LINE CAPACITY IS 4300 LBS (1950 KG)
FOR GREATER LOADS USE 2 PART LINE



1701 S 2ND AVE SHELTON, IA 51201
800-831-8588
WWW.MAINTAINER.COM

Winch:

- **38:1 Ratio worm gear winch with brake (standard), 30 feet/min line speed, single**
- **40.5:1 Ratio planetary winch with brake (optional) 60 feet/min line speed, single**
- **Equipped with 120' of 3/8" cable**
- **ANSI winch drum**
- **Hydraulic high torque winch motor**

Rotation:

- **Turntable slewing ring bearing**
- **Self-locking modular worm drive with spur gear output, 190.4:1 ratio**
- **Hydraulic rotation powered by a high torque motor**
- **615 Degrees of hydraulic rotation**

Crane Physical Specifications

- **60.5" Overall crane height**
- **Wt. 1875 lbs. (850 KGS.)**
- **22" x 22" Mounting space required**
- **Mounting requires eight (8) 7/8-9 (GRD -8) bolts**
- **Hydraulic requirements 8-10 GPM@3000 PSI**

Optional Equipment:

- **Wireless remote control, (plug & play)**
- **Planetary winch, (bolt on change out)**



Call for the dealer nearest you at 800.831.8588
or on the web at www.maintainer.com