

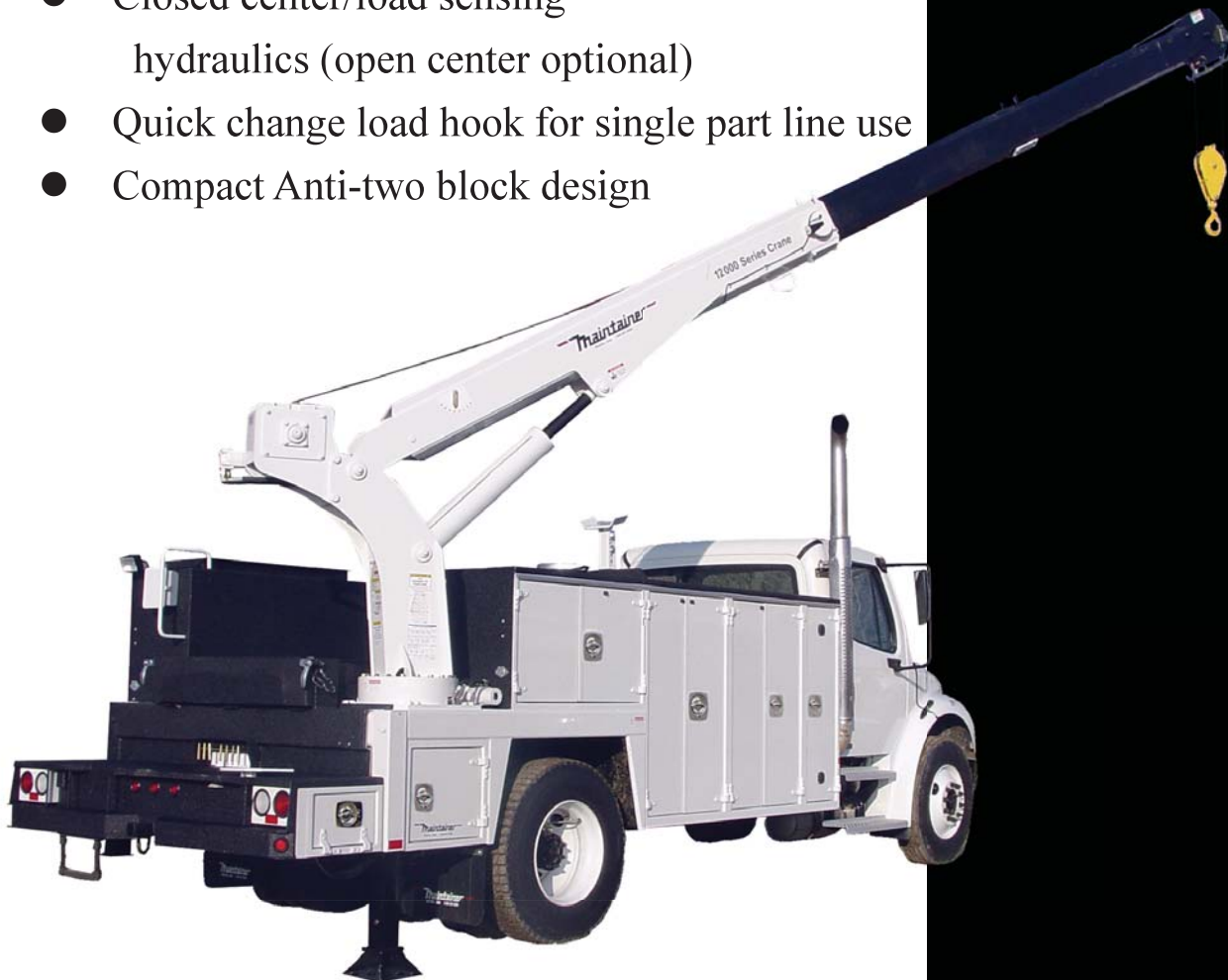
Maintainer

12000 Series Crane

Features

- 12,000 lb. maximum lift capacity
- 10,666 lb. lift capacity @ 6' from center line of rotation
- 24 feet hydraulic reach
- 615 degrees of rotation
- Hexagonal boom design
- Tall tower crane pedestal design
- Closed center/load sensing hydraulics (open center optional)
- Quick change load hook for single part line use
- Compact Anti-two block design

**Meets OSHA
1910.180
requirements and
ANSI B30.5 safety
standards**



Maintainer Corporation of Iowa, Inc
1701 S. 2nd Ave Sheldon, IA 51201
800.831.8588 ● www.maintainer.com

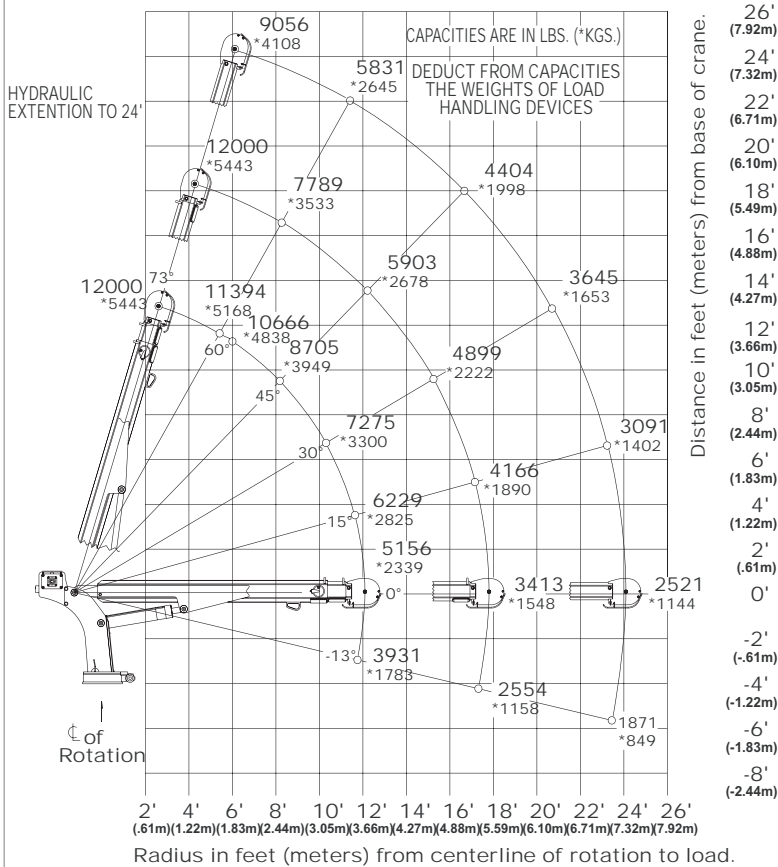
Copyright 2005

1
2
0
0
0
C
R
A
N
E



12000 SERIES CRANE CAPACITY CHART 75400 FT*LB CRANE RATING

MAX SINGLE LINE CAPACITY IS 7600 LBS (3447 KG)
FOR GREATER LOADS USE 2 PART LINE



Thaintainer 1701 S 2ND AVE SHELDON, IA 51201
800-831-8588
WWW.MAINTAINER.COM

Winch:

- 42:1 Ratio worm gear winch with brake (standard), 30 feet/min line speed, single
- Planetary winch with brake (optional) 60 feet/min line speed, single
- Equipped with 120' of 1/2" cable
- ANSI winch drum
- Hydraulic high torque winch motor

Rotation:

- Turntable slewing ring bearing
- Self-locking modular worm drive with spur gear output, 190.4:1 ratio
- Hydraulic rotation powered by a high torque motor
- 615 Degrees of hydraulic rotation

Crane Physical Specifications

- 60.5" Overall crane height
- Wt. 2200 lbs. (998 KGS.)
- 22" x 22" Mounting space required
- Mounting requires eight (8) 7/8-9 (GRD -8) bolts
- Hydraulic requirements 10-12 GPM@3000 PSI

Optional Equipment:

- Wireless remote control, (plug & play)
- Planetary winch, (bolt on change out)



Corporation of Iowa, Inc

Call for the dealer nearest you at 800.831.8588

or on the web at www.maintainer.com